



**MALLEE SEXUAL ASSAULT UNIT INC.
MALLEE DOMESTIC VIOLENCE SERVICES**

ANNUAL REPORT 2020

CONTENTS

CONTENTS.....	2
OUR VISION	3
OUR MISSION.....	3
AIMS AND OBJECTIVES.....	3
PRESIDENT’S REPORT	4
CHIEF EXECUTIVE OFFICER’S REPORT 2019-2020	6
MALLEE DHELK DJA ACTION GROUP.....	10
NSW DOMESTIC VIOLENCE FUNDING.....	10
IMPROVING HEALTH AND WELLBEING OUTCOMES FOR PEOPLE AFFECTED BY SEXUAL ASSAULT	11
MILDURA MULTIDISCIPLINARY CENTRE – MDC.....	11
RISK ASSESSMENT AND MANAGEMENT PANEL (RAMP) REPORT	12
ORANGE DOOR - July 2019 - June 2020	14
MALLEE FAMILY VIOLENCE EXECUTIVE (MFVE) REPORT	16
ACHIEVEMENTS AGAINST THE STRATEGIC PLAN.....	16
SERVICES – MALLEE SEXUAL ASSAULT UNIT INC. (MSAU)	17
OTHER SERVICES	17
SEXUALLY ABUSIVE BEHAVIOURS TREATMENT SERVICES (SABTS).....	17
OUR OFFICES	18
SERVICES – MALLEE DOMESTIC VIOLENCE SERVICES (MDVS)	19
THE WATTLE.....	20
SERVICE AREA.....	21
PROGRAMS	22
THERAPEUTIC FAMILY VIOLENCE SERVICE (TFVS)	22
PERSONAL SAFETY PROGRAM (PSP)	22
MESH THRIVE	22
SCHOOL HOLIDAY PROGRAM	23
SELF ESTEEM AND ASSERTIVENESS CHANGE PROGRAM (SEA CHANGE)	23
SPECIAL NEEDS AWARENESS PROGRAM (SNAP)	23
MALLEE DOMESTIC VIOLENCE SERVICES HIGHLIGHTS	24
MALLEE SEXUAL ASSAULT UNIT INC. HIGHLIGHTS	25
FINANCIAL REPORTS	26

OUR VISION

To be recognised as the national leader in the prevention of sexual assault and family violence and the provider of services of excellence to Victims/Survivors of crime.

OUR MISSION

To reduce the prevalence and impact of sexual assault and domestic violence in the Mallee through partnerships which raise community awareness and undertake preventative and early intervention strategies and provide specialist and coordinated care valued by survivors of sexual assault and family violence, meeting safety needs and facilitating their empowerment, dignity and reintegration into communities of choice.

AIMS AND OBJECTIVES

Mallee Sexual Assault Unit Inc./Mallee Domestic Violence Services aim to provide direct services to victims/survivors of sexual assault and victims of family violence in the context of their family and other support systems.

Services include crisis care responses, counselling, casework, advocacy, referral and group work. Other work undertaken includes the development and participation in a range of educational and training strategies for relevant practitioners and communities of interest.

To provide timely and appropriate responses to recent and past victims/survivors of sexual assault.

To provide education, training and consultation to relevant individuals and services to facilitate meeting the broader needs and concerns of victims/survivors of sexual assault and family violence.

To develop and participate in broad community education strategies that work towards the prevention and early identification of sexual assault and family violence.

PRESIDENT'S REPORT

On behalf of the Committee of Management, it is my great pleasure to present the Annual Report for the year 2019-2020

Mallee Sexual Assault Unit Inc. and Mallee Domestic Violence Services is highly regarded across the sector and community.

The Committee of Management acknowledges the exceptional level of commitment by staff in providing high quality services to victims / survivors of sexual assault and domestic violence, 24 hours a day, 7 days a week. Their commitment to best practice ensures the high quality of services for our clients. This year has been exceptionally challenging with COVID-19. But the staff and management team have continued to provide an outstanding 24-hour service to the community.

Governance

The organisation has adopted an all-inclusive Strategic Plan to drive the vision and mission of the organisation throughout the next five years.

The organisation incorporated a planning for effectiveness approach to articulate the organisation's mission and purpose and developed an action plan for the execution of our determined aims and objectives.

Some of the key objectives include:

- Continual sourcing of additional resources towards addressing the ever-increasing demand for client services. Which includes the purchase of 48-50 Deakin Avenue, Mildura situated in the CBD/legal/banking district of Mildura, which will accommodate the new Multi-Disciplinary Centre.
- The provision of many professional training and community education programs across North West Victoria and the border communities of New South Wales.
- Community awareness programs for the diverse multi-cultural communities of the Mallee Region.

The Committee of Management also acknowledges our CEO, Joanne Sheehan-Paterson, for her enduring enthusiasm and drive. Her vision has ensured Mallee Sexual Assault Unit Inc. and Mallee Domestic Violence Services remains at the forefront of innovative practice and is a role model for other services.

I also acknowledge my fellow Committee of Management members who volunteer their time and expertise in their respective fields, my sincere gratitude for your efforts and support.

The Committee of Management would also like to acknowledge and extend thanks to the Department of Health and Human Services Victoria, Family Safety Victoria, Far West Area Health Services New South Wales and the Department of Family and Community Services for their continued funding and support. I also acknowledge our sincere gratitude to other organisations and individuals across the Mallee and border communities of New South Wales who contribute and support the services.

The Committee of Management and staff wish to acknowledge partners of the Multi Disciplinary Centre: Victoria Police, Child Protection Victoria, Sunraysia Community Health Services and the Murray Mallee Community Legal Centre. We would also like to acknowledge our partners within the Orange Door, Family Safety Victoria, Mallee Accommodation Support Program, Mallee District Aboriginal Services, Sunraysia Community Health Services and the Department of Health and Human Services.

It is an enduring privilege to be involved with an organisation that provides critical care and support to people who have been traumatised by the crisis of sexual assault and family violence. This will be my last term as President of this inspirational organisation. My best wishes to all.

Dennis McLaughlan
President
Committee of Management
Mallee Sexual Assault Unit Inc.
Mallee Domestic Violence Services

COMMITTEE OF MANAGEMENT MEMBERS

Danielle DOUGHERTY	Maira McGEE (Treasurer)
Ben CALLAGHAN	Lorraine THIELE
Dennis McLAUGHLAN (President)	Kate STOCKMAN
Peter MAILES	Paul AVERY (Vice President)

CHIEF EXECUTIVE OFFICER'S REPORT 2019-2020

Mallee Sexual Assault Unit Inc. and Mallee Domestic Violence Services (MSAU-MDVS) provide essential and vital services to the communities of the Northern and Southern Mallee regions in Victoria and the border communities of New South Wales and South Australia.

Mallee Sexual Assault Unit Inc. continues to provide specialist 24-hour crisis care services, counselling, advocacy, support and therapeutic treatment services for children under 18 years with problem sexualised behaviours, and sexually abusive behaviours.

Outreach counselling clinics were conducted throughout the region, including Robinvale, Swan Hill, Ouyen, Dareton, Wentworth, Balranald, Kerang, Sea Lake, Wycheproof, Manangatang, Donald, Birchip, Charlton, Nyah, Lake Boga and the Mallee Track districts.

Mallee Domestic Violence Services responded to the needs of people who had experienced or witnessed domestic/family violence throughout the Mallee regions in Victoria and the border communities of New South Wales and South Australia.

Services provided include counselling, crisis care, emergency and transitional accommodation, support, advocacy, group programs and preventative education programs, family violence therapeutic services.

Throughout 2019-2020 the organisation delivered prevention and education programs about sexual assault and family violence throughout the region.

Many group programs were conducted during 2019-2020, including the SeaChange Program for women and adolescents, the children's Music Therapeutic Program, and the Mental Emotional Social Health (MESH) Therapeutic Program. During 2019-2020 a new Family Violence Therapeutic Program was funded and is conducted in partnership with Berri Street, who provide the "Restoring Childhood" program. Our partners Mallee Accommodation Support Program, Mallee Family Care and Mallee District Aboriginal Services, work collaboratively in the delivery of the MESH group programs.

Mallee Sexual Assault Unit Inc. in conjunction with Victoria Police and Child Protection Victoria operates a specialist Multi-Disciplinary Centre (MDC). This centre is a 24-hour sexual assault centre where persons who have experienced sexual assault and child abuse receive a comprehensive response to their needs by Police, Sexual Assault counsellors, Forensic Medical practitioners and Child Protection practitioners. This facilitates a collaborative, timely intervention in situations where sexual assault or child abuse have been identified.

The Multi-Disciplinary Centre has specialist police investigative facilities, forensic medical suite and specialist sexual assault support services which provide best practice quality care for victims of crime.

Mallee Sexual Assault Unit Inc. is proud of the collaborative working partnership with the MDC Unit, Victoria Police and Child Protection Services in Mildura.

Sunraysia Community Health Services and the Murray Mallee Community Legal Centre work collaboratively in the Multi-Disciplinary Centre (MDC). These additional services have provided a Community Health Nurse Specialist and Specialist Family Violence Legal Services for clients of the MDC. The MDC has received a national award in recognition of the high level of service to victims of sexual assault and child abuse.

In the Southern Mallee Centre in Swan Hill, our partners are the Murray Mallee Community Legal Centre, Mallee Accommodation Support Program and Child First who are co-located with our services to provide an integrated service response for clients in the Southern Mallee of Victoria and the border communities of New South Wales.

During 2019-2020 the organisation has worked collaboratively with many community service organisations, the Department of Health and Human Services of Victoria and New South Wales, and Family Safety Victoria.

The organisation has participated in state-wide and national reference groups and many research projects. Mallee Sexual Assault Unit Inc. fully supports the important work of the Royal Commission into Institutional Responses to Child Sexual Abuse and is working collaboratively to implement their recommendations.

We have provided counselling and advocacy for victims/survivors of childhood sexual abuse, provided support and assistance to victims writing submissions, and assistance to victims who appeared before the Royal Commission.

Mallee Domestic Violence Services continues to work with the Victorian Integrated Family Violence Strategy. This approach ensures improved integrated services throughout the state and has increased the capacity to meet service demands.

The Strategy seeks to reduce the levels of re-victimisation and re-offending by providing people who have experienced family violence with the support they need, combining justice responses with human services approaches and programs to change the behaviour of those who use violence.

In May 2018 one of the most significant recommendations from the Family Violence Royal Commission was the establishment of the Support and Safety Hub (The Orange Door) for the Mallee. The Mallee being one of the first 5 pilot sites in Victoria. Mallee Sexual Assault Unit Inc. and Mallee Domestic Violence Services is a key partner in this initiative. The Orange Door is a new way for women, children and people experiencing family violence and families who need help with the care and wellbeing of their children to access the support they need.

The Orange Door also supports men to change their behaviour and is a new way for men to access services to be better partners, fathers and family members.

This is a free service. The Orange Door welcomes people of any age, gender, sexuality, culture and ability.

The Orange Door works with local Aboriginal services and communities, multi-cultural services, LGBTIQ+ and disability services to meet the diverse needs of individuals and families.

The Orange Door will connect and refer to services that are needed in order to keep families safe. The Orange Door provides services to people living in the Mallee, which includes Buloke, Gannawarra, Mildura and Swan Hill Shires. The Southern Mallee Orange Door access point has now been established located within Mallee Sexual Assault Unit Inc. Mallee Domestic Violence Services in Swan Hill.

During 2019-2020 the organisation has received an additional increase in funding to address the ever-increasing demand for services and to implement the important reforms from the Royal Commission into Family Violence.

During 2019-2020 Mallee Sexual Assault Unit Inc. Mallee Domestic Violence Services was included in the Victorian State-wide \$21 million Refuge Redevelopment Program. This program was to redevelop existing refuges to the new core and cluster model, which also provides 24 hours staffing within the facilities.

In March 2020 Mallee Sexual Assault Unit Inc. Mallee Domestic Violence Services opened “The Wattle” our wonderful new facility in Mildura, which has a cluster of six units and an administration / service block within the one site.

This provides emergency secure accommodation for six families.

From March 2020 we have all endured the impacts of COVID-19. Mallee Sexual Assault Unit Inc. Mallee Domestic Violence Services have during this time continued to provide all services for our clients across the Mallee and the border communities of New South Wales.

Innovative alternative forms of service provision have been employed to engage with our clients.

The CEO of the organisation is the Chair of the Mallee Family Violence Executive (MFVE). Our vision is “for women and children to live free from violence in Victoria”. The MFVE engages in early intervention and prevention strategies to prevent future demand for violence related services.

In April 2016, the 227 Recommendations were released by the First Royal Commission into Family Violence in Victoria. The organisation in collaboration with the Mallee Family Violence Executive and the Department of Health and Human Services, the Department of Premier and Cabinet and Family Safety Victoria, have diligently worked on the implementation of the recommendations.

During 2019-2020 the CEO of MSAU-MDVS has been the Chair of the National Association of Services Against Sexual Violence (NASASV). The NASASV works to further the shared aims of services for those who have experienced sexual violence across the nation, with the goal of eliminating sexual violence in the community.

NASASV was successfully funded during 2019-2020 to work in collaboration with the Commonwealth Department of Social Services on a significant project.

NASASV will review the National Standards of Practice Manual for Services Against Sexual Violence (Second Edition) to reflect advances in best practice in planning prevention and service provider responses, and to develop the National Standards of Practice manual for Services against Sexual Violence (Third Edition).

The organisation is officially accredited by the Quality Innovation Performance (QIP) and the Department of Health and Human Services Standards. MSAU-MDVS successfully achieved Rainbow Tick accreditation in 2019.

I would like to sincerely thank the Committee of Management for their loyal service, strategic direction, and support during the past year.

I wish to thank all staff for their dedication, commitment and compassion and for all of their accomplishments achieved during the past year, including SOCAT, MDC Child Protection Team, Forensic Physicians, MDC Nurse and Murray Mallee Community Legal Centre team, Child First team and Financial Counsellors.

It is a privilege to work alongside committed professionals so that we can, in partnership, assist people who have experienced sexual assault, child abuse and family violence.

Joanne Sheehan-Paterson
Chief Executive Officer
Mallee Sexual Assault Unit Inc.
Mallee Domestic Violence Services

MALLEE DHELK DJA ACTION GROUP

Mallee Dhehk Dja Action Group has a pivotal role in implementing community led responses that educate, prevent, respond to and reduce family violence in the Aboriginal community. The Mallee Dhehk Dja Action Group is an inclusive mechanism for the Aboriginal community to develop local responses to family violence matters, ensuring they are responsive and culturally relevant to Aboriginal individuals, families and communities in the Mallee area.

As part of our administration, Mallee Dhehk Dja Action Group manages the use of Mallee Dhehk Dja Action Group Discretionary Funds. The Mallee Dhehk Dja Action Group also manages and supports the Community Initiatives Fund (CIF) which funds Aboriginal community projects which aim at reducing and preventing family violence. Throughout the years we have built a good rapport with Mallee Sexual Assault Unit Inc. Mallee Domestic Violence Services and a shared understanding of preventing family violence in our Community.

Through the Mallee Dhehk Dja Action Group (MDDAG) Chair and Regional Coordinator, we actively participate in and strengthen partnership links with the Regional Integrated Family Violence Strategy, Mallee Family Violence Executive, Northern Mallee Family Violence Network, Aboriginal services and mainstream service providers.

Mallee Dhehk Dja Action Group would like to take this opportunity to thank everyone at Mallee Sexual Assault Unit Inc. Mallee Domestic Violence Services for being our auspice body as we all aim towards preventing family violence in the Mallee community.

NSW DOMESTIC VIOLENCE FUNDING

In 2016-17 MSAU-MDVS entered a partnership arrangement with MASP to deliver a domestic violence response service to residents of Wentworth and Balranald LGAs in NSW.

Funded by NSW Family & Community Services, the Domestic Violence Enhanced Response (DVRE) now allows for an after-hours crisis response to victims of domestic violence who are unable to remain in their homes due to safety concerns.

The after-hours response element is being provided by MSAU-MDVS while MASP provides the ongoing support to DV clients returning home under the Staying Home Leaving Violence (SHLV) model.



IMPROVING HEALTH AND WELLBEING OUTCOMES FOR PEOPLE AFFECTED BY SEXUAL ASSAULT

In October 2015, SCHS appointed a new Multi-Disciplinary Centre (MDC) nursing position to provide health support to clients accessing the Mallee Sexual Assault Unit Inc. and Domestic Violence Service. The service is available to anyone who has ever experienced sexual assault or any of their non-offending family members who may have been affected. Adults, young people and children can all access the service.

In order to be sensitive to the needs of the clients, the position has been filled by a female nurse with extensive experience supporting individuals to address their overall physical and emotional health and wellbeing needs. In delivering the service the nurse identifies the needs of her clients, provides care planning and makes referrals to other services as appropriate for ongoing support. If required, the nurse can also provide short to medium term care and access to timely health and wellbeing information and education. The nurse can also work with affected families to provide a safe and stable environment for family member(s) who have experienced sexual assault.

After a considerable consultation period, in April 2016 the position commenced working from the Multi-Disciplinary Centre at the Centre Against Sexual Assault. This allows the nurse to work closely with other service providers within the MDC partnership, improving the working relationships and health outcomes for clients.



MILDURA MULTIDISCIPLINARY CENTRE – MDC

In Mildura a 24-hour Sexual Assault centre allows victims of a sexual assault to receive a consistent and comprehensive response to their needs by police, sexual assault workers / counsellors and if appropriate child protection practitioners. The Sexual Assault Centre includes a specially trained police unit, the Sexual offences and Child Abuse Team (SOCAT), the Mallee Sexual Assault Unit (MSAU) a Child Protection Team (DHHS) and a Community Health Nurse.

SOCAT is staffed by detectives whose specific role is to investigate sex offences and child abuse and provide support to victims.

The Child Protection Team is staffed by specialist practitioners whose specific role is to investigate allegations of physical and / or sexual abuse against children. These investigations may be conducted jointly with SOCAT.

The MDC Women's Health Nurse provides a comprehensive client centred health service to adults, young people, children and their family members (non – offending) who have experienced a recent or past sexual assault.

The Multi- Disciplinary Centre aims:

- To improve support for victims / survivors and families.
- To increase the reporting of sexual offences and reduce attrition of cases from the criminal justice system.
- To improve and integrate the investigation of sexual offences and child abuse.
- To improve the quality of evidence in sexual offences and child abuse cases.
- To improve the capability of agencies to respond collaboratively.

RISK ASSESSMENT AND MANAGEMENT PANEL (RAMP) REPORT

A Risk Assessment Management Panel (RAMP) is a formally convened monthly meeting with key agencies and organisations at a local level that conducts a multi-agency risk assessment of individuals who are at high risk of serious harm from family violence and develops coordinated action plans to mitigate risk. RAMPs are intended to increase the safety of women and children and increase perpetrator accountability for the violence

A Victorian Government Memorandum of Understanding to implement RAMPs has been signed by the Department of Health and Human Services, Victoria Police and the Department of Justice and Regulation.

The commitment of Community Service Organizations and associate members who are not covered by the Memorandum of Understanding will be covered by local agreements that describe the role and responsibilities of RAMP participants and support the functions of the RAMPs

The Mallee Risk Assessment Management Panel:

The Mallee RAMP went operational in June 2016. The panel consists of two Co-Chairs - one from the specialist family violence agency (MSAU-MDVS) and one from Victoria Police, a Coordinator, Core Members, and Associate Members. The Mallee RAMP is held once a month and members from Mildura and Swan Hill meet in their area and video link in. The core membership comprises of senior managers from the following organizations:

- Orange Door Child First- Mallee Accommodation and Support Program (MASP)
- Community Corrections – Department of Justice and Community Safety Victoria
- Child Protection – Department of Health and Human Services (DHHS)
- Office of Housing – Department of Health and Human Services (DHHS)
- Drug and Alcohol Services – Sunraysia Community Health Services (SCHS) and Swan Hill District Health (SHDH)
- Mental Health Services – Ramsay Health and Bendigo Health
- Men's Behaviour Change Program (MBCP) – Sunraysia Community Health Services (SCHS)
- Specialist Family Violence Service – Mallee Sexual Assault Unit Inc. Mallee Domestic Violence Service (MSAU-MDVS)
- Victoria Police

Associate members include representatives from any other organization or agency that have particular knowledge of a case. These members are considered to play a vital role in supporting RAMP to reduce the level of risk to the victim-survivor. Associate members attend RAMP on an "as needed" basis to present information relevant to risk assessment and to discuss risk management planning.

RAMP Information Sharing System (RISS)

RISS is the online information exchange and collection portal for everything RAMP related which has been in use since early 2017. RISS is the mechanism used for making/receiving a RAMP referral; collecting data on victim-survivors, children and perpetrators; scheduling RAMP meetings; accessing the RAMP agenda; recording and distributing RAMP meeting minutes; assigning RAMP actions to services; updating members on any necessary information following a RAMP meeting; transferring cases to other RAMP areas across Victoria and opening/closing RAMP referrals dependent on eligibility. RISS is only accessible to RAMP Coordinators, RAMP Co-Chairs, Core members and Associate members with different levels of access dependent on the individual's involvement in the case.

RAMP referrals:

2019-2020 financial year:

44 referrals received by RAMP. This is a decrease in the number of referrals received in comparison to the 2018-2019 data, which saw 74 RAMP referrals. The presence of COVID 19 is believed to be the major reason behind this reduction in reporting.

Aboriginal / Torres Strait Islander (ATSI) identification:

Nine of the 44 referrals to RAMP involved a party who identified as ATSI.

Culturally and Linguistically Diverse (CALD) identification:

Two of the 44 referrals to RAMP involved a party who identified as CALD.

Scott Olsen

Mallee RAMP Coordinator

ORANGE DOOR - July 2019 - June 2020

In the 2019-2020 financial year, the Mallee Sexual Assault and Mallee Domestic Violence Service staff within The Orange Door Mallee, created **3,423** cases. A case is created for each individual person identified in a referral via an L17 Police Referral, a self-referral and or a professional referral on behalf of a client.

161 referrals from the Orange Door Mallee to Mallee Sexual Assault and Mallee Domestic Violence Service, of these referrals, 43 were assessed as 'At Risk', 88 were assessed as 'Elevated Risk' and 30 were assessed as Serious Risk.

In March MDVS Orange Door staff successfully transitioned to work from home/ offsite and continued to provide a quality service to Victim Survivors. The Orange Door has continued to operate in an integrated manner using TEAMS for daily communication, meetings, team building activities and training.

MDVS Orange Door staff were part of a pilot to test the Multi Agency Risk Assessment and Management framework (MARAM) tools as part of the MARAM training and implementation of the MARAM tools.

On 27th May 2020, the Victorian Auditor-General's Office audit report was released in relation to the Support and Safety Hubs performance.

VAGO audit key findings - Mallee



Information-sharing within a multidisciplinary setting: The report provided a case study from Mallee to highlight good practices in using CSO databases to share information for new referrals and risk assessments.

Case study—checking CSO databases at Mallee

At the Mallee hub, practitioners from all disciplines meet daily to triage new referrals. In advance of this meeting, practitioners check their agency's database to see whether any of the families have had previous contact with their service. This improves risk assessments by helping practitioners understand whether there is a history of family violence or child wellbeing concerns.

The triage meeting also helps practitioners identify other individuals who may need support. We found examples of practitioners identifying additional family members who police had not noted on their referral. This can occur where the family members were not home at the time of the incident.

Source: VAGO.

Orange Door 2 Year Birthday!

On the 31/05/2020, The Orange Door celebrated its 2nd Birthday! We celebrated via Teams with coffee, lots of reflection from the past two years and a game of Trivia.



MALLEE FAMILY VIOLENCE EXECUTIVE (MFVE) REPORT

During 2019 - 2020, the Mallee Family Violence Executive (MFVE) has continued to strengthen the Mallee's contribution to wide ranging reform in the family violence sector. The clear strategic direction that has been articulated in the current MFVE strategic plan has driven our work to date, ensuring that we continually reinforce the value of place-based, community led solutions as vital components of the reform agenda. MFVE has worked harder than ever to build and strengthen its collaboration across the community services sector, encountering challenges that we could not have foreseen. COVID-19, a global pandemic has heavily impacted communities, organisations, service delivery, safety and wellbeing of our most vulnerable community members. However, despite these challenges the MFVE has continued to work toward strengthening its strategic position.

ACHIEVEMENTS AGAINST THE STRATEGIC PLAN

The MFVE undertakes strategic planning at regular intervals to ensure our approach to family violence service system integration remains relevant and responsive to local area priorities, including emerging needs, and is aligned with the Victorian Government policy and best practice service directions. Strategic planning supports the MFVE to promote, within the state-wide reform agenda:

- Continued service development, integration and improvement for the Mallee;
- Workforce development across the Mallee; and
- Leadership of integration in the Mallee.

The MFVE are now coming to the end of the implementation of the MFVE Strategic Plan 2018- 2020. The past twelve months has continued to see great work being achieved in an ever changing and challenging environment. Some of the notable achievements from within the strategic priority areas include:

1. Leadership

- Local forum that showcased best-practice of Family Violence reform integration in the Mallee. The forum highlighted current project, collaborations, and innovations that are occurring in the region, across service sectors.
- Respect Victoria CEO visiting the Mallee in conjunction with Family Violence Forum
- Development of a communication strategy to support systems-level reform and integration
- Support to member agencies to the Mallee partnership and local networks to undertake gender audits and organisational readiness

2. Workforce

- New funding and targets for the delivery of MARAM Collaborative Practice training
- Supporting family violence to be included in organisational orientation structures
- Several member organisations participating in the Workforce Capacity Building project
- The emergence of shared model for working with families experiencing family violence (Safe and Together)

3. Governance

MFVE membership has expanded to provide stronger representation across the Mallee, now including senior staff from Sunraysia Mallee Ethnic Communities Council (SMECC), The Department of Education and Training (DET), the Swan Hill Rural City Council (SHRCC), Gannawarra Shire Council (GSC), and Buloke Shire Council (BSC)

Donna Strong
Acting Principal Strategic Advisor
Mallee Family Violence Executive

SERVICES – MALLEE SEXUAL ASSAULT UNIT INC. (MSAU)

Mallee Sexual Assault Unit is part of a multi-disciplinary centre which provides 24-hour assistance to victims of sexual assault.

The 24-hour Sexual Assault Centre includes a specially trained police unit, the Sexual Offences Child Abuse Investigation Team (SOCAT), the Mallee Sexual Assault Unit (MSAU) and the Child Protection Team (DHHS).

SOCAT is staffed by detectives whose specific role is to investigate sex offences and child abuse and provide support to victims.

The Child Protection Team is staffed by specialised practitioners whose specific role is to investigate allegations of physical and/or sexual abuse against children. These investigations may be conducted jointly with SOCAT.

OTHER SERVICES INCLUDE:

- 24 Hour crisis care/forensic medical services.
- Information regarding medical and legal rights.
- Counselling and support for victims and significant others.
- Advocacy and referrals to other agencies.
- Interpreter services where necessary.
- Therapeutic treatment services for problem sexualised behaviours.
- Safe accommodation if required.
- Ongoing support throughout the legal process.
- Community / school education programs.
- Support groups.
- Education and training for professional and community groups.
- Outreach clinics within the Northern/Southern Mallee region and the border communities of New South Wales.

SEXUALLY ABUSIVE BEHAVIOURS TREATMENT SERVICES (SABTS)

SABTS provides counselling and support for children and young people up to the age of 17 who display problem or sexually abusive behaviours. Mallee Sexual Assault Unit Inc. conducts thorough assessments with children and young people. Our model accommodates the developmental needs of the child or young person, including those with learning and language difficulties, developmental delays and varying levels of intellectual ability.

Involvement of the family in treatment is essential in producing the best outcome for the child or young person. To support a child or young person's efforts to change their behaviours, the parents or carers need to understand the sexual abusive behaviour cycle, and the emotional states and circumstances that enable the behaviour to occur, including family dynamics that might trigger the cycle.

Parents and carers need to be aware of and support the new positive coping strategies developed for the child or young person to interrupt the cycle, and they need to support the child or young person to maintain and implement those strategies. Family work is particularly important when a child or young person is unable to remain in the family home due to the sexually abusive behaviours. Where this occurs, family reunification is a high-priority treatment goal.

When all the children involved are under 10, the behaviour is referred to as 'sexualised behaviour' or 'problem sexual behaviours' rather than 'sexually abusive behaviour'. Children under 10 are deemed by Victorian law to be unable to consent to any form of sexual activity. In addition, children under 10 cannot be held criminally responsible for their behaviour.

The SABTS program significantly reduces the likelihood of the behaviours continuing. Sexually abusive behaviours in a child or young person are not an indicator of paedophilia, and do not mean that the child or young person will go on to sexually offend as an adult.

The impact of sexually abusive behaviours on children, young people and the child or young person displaying the behaviours may be long term.

OUR OFFICES:



Mildura Office:

144-146 Lime Avenue

Swan Hill Office:

14-18 McCallum Street



SERVICES – MALLEE DOMESTIC VIOLENCE SERVICES (MDVS)

Mallee Domestic Violence Services offer a range of services, including the following:

- 24-Hour Crisis refuge accommodation.
- Medium Security accommodation.
- Transitional accommodation.
- Counselling services.
- Advocacy and referral to other relevant services.
- Court Support.
- Information and education about the effects of domestic violence.
- Assistance and support to re-establish the victim in the community.
- Outreach services.
- Specialist support for children who are victims or who have witnessed domestic violence.

Violence against women is widely recognised as a global problem. It is one of the least visible, but most common forms of violence, and one of the most insidious violations of human rights. It has serious impacts on the health and wellbeing of those affected and exacts significant economic costs on communities and nations.

The impacts of family violence are profound: Domestic and Family Violence in Australia

In Australia, one woman per week is killed by a current or former partner and one male per month is killed by a current or former partner on average.

For both women and children, family violence has extensive and often long term physical and emotional consequences. It creates homelessness, disrupts children's schooling, and leads to social and economic isolation for women.

Family Violence is the abuse of power over another person. It mostly affects women and children; however, the victims can also be men.

Mallee Domestic Violence Services provides a confidential and client directed service to victims /survivors of family violence, assisting them to make informed choices regarding their situation.

We provide a 24-hour crisis response across the Mallee and border communities of New South Wales and South Australia.

Facts

- Domestic Violence is a crime.
- There are no excuses for domestic violence.
- Domestic violence occurs across all cultures and social groups.
- The victim/survivor of domestic violence are never to blame.
- While alcohol and drug abuse are often a contributing factor, it is not an excuse for the violent behaviour.
- Witnessing domestic violence can have long term and damaging emotional effects on children.

THE WATTLE

“To many Australians the wattle stands for home, country, kindred, sunshine and love, every instinct that the heart most deeply wishes”.

1st September, 1910, The Sydney Morning Herald.

In March 2020, Mallee Sexual Assault Unit Inc. Mallee Domestic Violence Services opened “The Wattle”, our wonderful new facility in Mildura, which is a core and cluster refuge facility.

At “The Wattle”, the following types of accommodation are available:

- 2 three-bedroom units
- 2 two-bedroom units (one adapted for special needs)
- 2 one-bedroom units



Playground area.

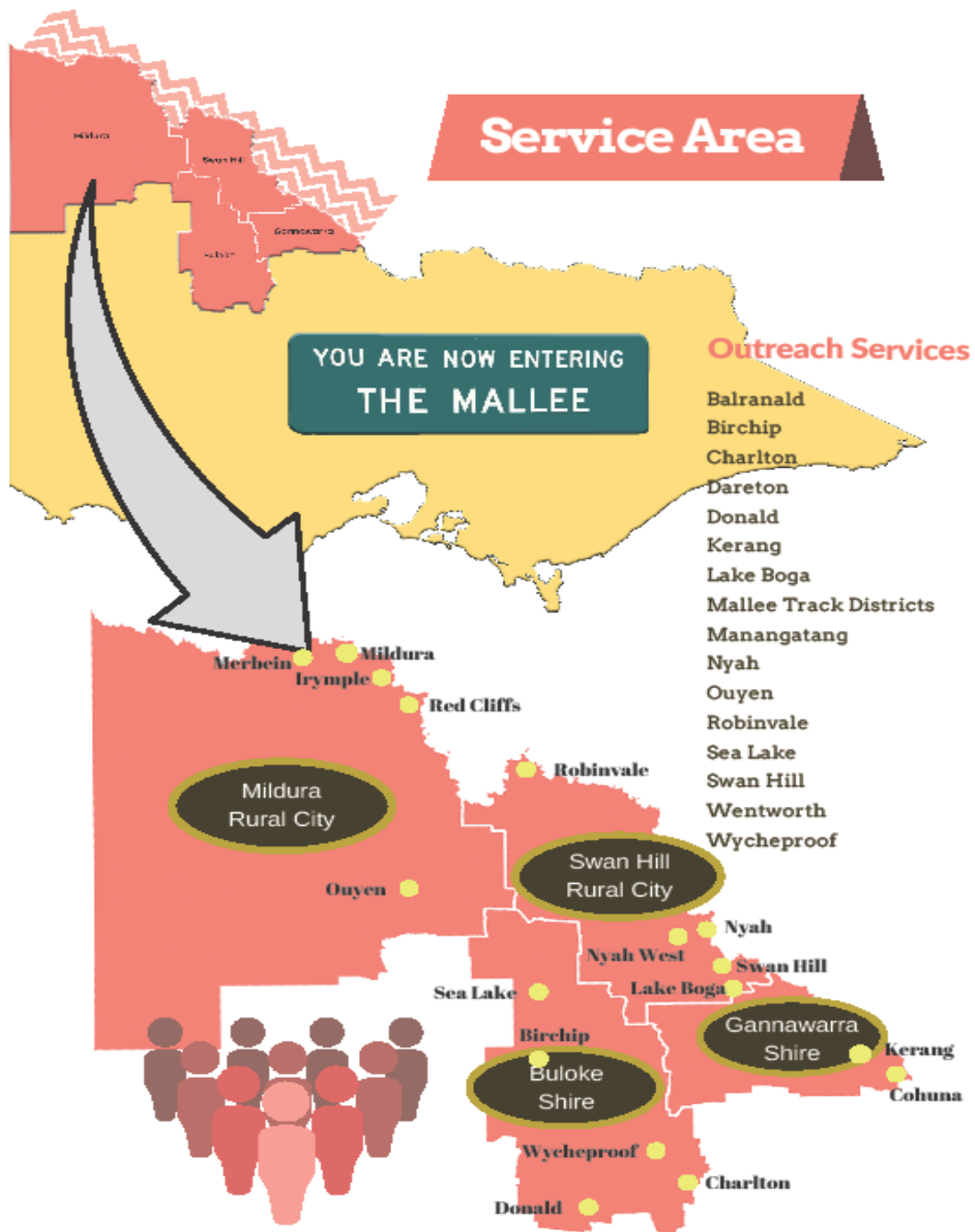
Some of the units have links, which allows them to expand to accommodate larger families, when necessary.

The site also has an administration and client services block. “The Wattle” provides secure emergency accommodation for six families, with 24-hour staffing of the site.



Unit kitchen at “The Wattle”.

SERVICE AREA



PROGRAMS

THERAPEUTIC FAMILY VIOLENCE SERVICE – TFVS

The Therapeutic Family Violence Service provides a stepped care model of therapeutic interventions for adult and child victim/survivors of family violence. The model has been designed to provide tailored, integrated therapeutic support to people who have experienced family violence and their non-offending caregivers and other family and/or other support people.

The model of services includes a therapeutic screening for victim/survivors for services. It must be noted that MSAU-MDVS intake screens for family violence risk and safety factors and integrates a family violence risk assessment into all our work. Clients will then become engaged in services provided by MSAU-MDVS, prior to an internal referral being made to TFVS.

Overview of Service Model:

- MSAU-MDVS therapeutic counselling
- MESH Group
- Restoring Childhood

Referrals into MTFVS are accepted from several sources which can include:

- Family Violence Programs
- The Orange Door
- Police
- Self-referral
- Family Support & Child First Services
- Child Protection.

PERSONAL SAFETY PROGRAM (PSP)

The Personal Safety Program (PSP) is aimed at Primary School age children.

Objectives of this program:

- Teaches children “we all have to right to feel safe”.
- Raises awareness, teaches strategies and coping skills that can be applied to various difficult situations.

Mallee Sexual Assault Unit Inc. and Mallee Domestic Violence Service staff delivers this program in several sessions delivered at schools. The program can also be delivered in a one-on-one basis, according to needs.

MENTAL, EMOTIONAL, SOCIAL HEALTH TOWARD HEALING AND RECONNECTION.... INSIGHTS THAT VALUE EQUALITY (MESH THRIVE)

Mental, Emotional, Social Health General (MESH GENERAL) MESH is around sharing experiences in a trusted, safe and supported group setting where children and adults can grow and develop. The MESH Program was created to support the needs of children and families who may need support around healthy living skills. Each week has a different topic to assist in reducing feelings of isolation and loneliness, build connectedness, developing skills to assist in reducing shame and blame while learning how to identify and express feelings to build healthy relationships. MESH aims to Increase self-awareness and self-esteem in participants while learning to care for self and others. MESH is an 8-week program which Mallee Domestic Violence Service staff facilitate and take part in.

MESH THRIVE was created to support the needs of children and families affected by family violence and trauma. MESH THRIVE provides children and families the chance to share stories of family violence and

trauma and realise they are not alone by working in a group with people who have shared similar experiences. MESH THRIVE aims to support people to work through feelings that come with family violence, heal from trauma while giving children and families the chance to wish for a better future. MESH THRIVE works through understanding the gendered nature of violence and how to respect ourselves and other people in our lives.

MESH THRIVE is an 8-week program which Mallee Domestic Violence Service staff facilitate and take part in.

SCHOOL HOLIDAY PROGRAM

The School Holiday Program is open to all children accessing the services and for children of adults receiving a service from Mallee Sexual Assault Unit Inc. Mallee Domestic Violence Services.

The program runs Monday to Friday through the school holidays and consists of indoor craft, games and activities, as well as occasional excursions to external activities such as cinema, bowling, mini golf. The program also incorporates educational activities such as healthy eating and safety.

SELF ESTEEM AND ASSERTIVENESS CHANGE PROGRAM (SEA CHANGE)

The Sea Change Program aims to assist participants to become more assertive, increase their self-esteem and self-confidence, while enabling them to become more effective in interpersonal relationships and taking control of their lives.

The course is designed to provide an educational and motivational learning environment, encouraging group participation, while allowing individuals to explore new concepts and skills.

Objectives of the program are:

- To develop concepts of self-esteem, self-acceptance and self-reliance.
- To assist participants to be aware of their feelings and how to appropriately express them.
- To present concepts of positive self-talk, turning negative thinking around to assist participants to change irrational thoughts.
- To help participants understand how skills in communication relate to building self-esteem and assertiveness.

SPECIAL NEEDS AWARENESS PROGRAM (SNAP)

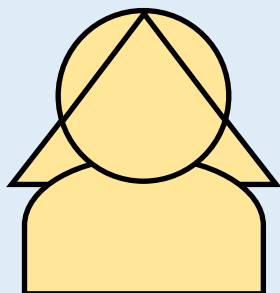
The Special Needs Awareness Program (SNAP) is a resource for use with people with an intellectual disability of any age. Sexual abuse is ultimately an abuse of power.

People with an intellectual disability are vulnerable to sexual abuse because of their trust in and dependency on adults and their lack of information regarding the dangers of abuse. Parents/carers caution their children about stranger danger yet are often at a loss when it comes to protecting them from people they know and trust.

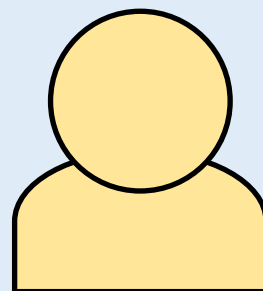
Protective Behaviours philosophy:

- We all own our bodies and minds. Everyone has the right to set their own boundaries to decide who, when and where their bodies are touched.
- Everyone has the right to say NO to any unwanted or unsafe touching.
- Everyone has the right to be informed of potential dangers including abuse and taught protective measures to ensure their personal safety.
- Sexual abuse is never the fault of the victim.

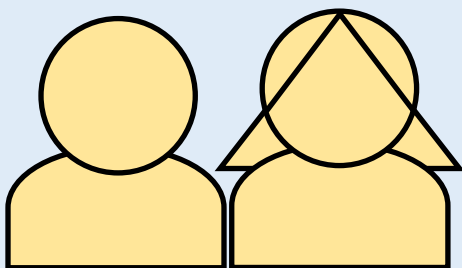
MALLEE DOMESTIC VIOLENCE SERVICES HIGHLIGHTS



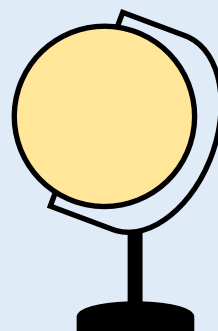
3831
Female clients



623
Male clients



567
Children under 10



Clients from
35 countries

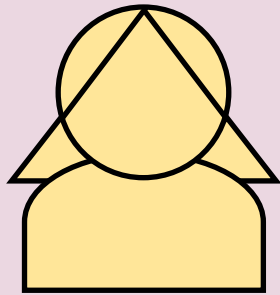


481
Family Violence Flexible
Support Packages approved

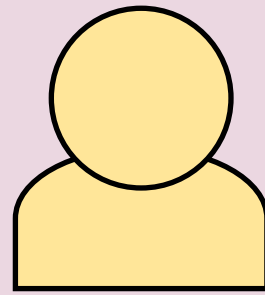


92 clients
Received legal support from
Family Violence Legal Unit

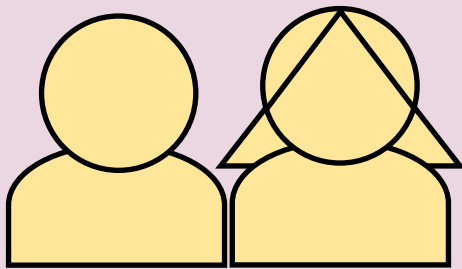
MALLEE SEXUAL ASSAULT UNIT INC. HIGHLIGHTS



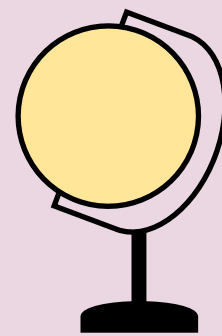
1195
Female clients



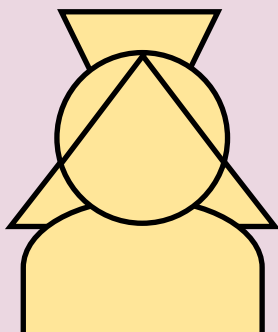
397
Male clients



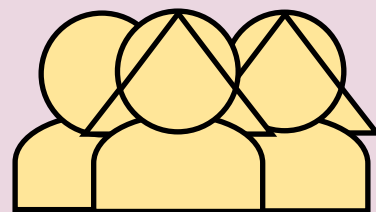
330
Children under 10



Clients from
14 countries



121 clients received support
from SCHS Nurse



501
MDC / SOCAT
Referrals



INDEPENDENT AUDITOR'S REPORT

To the Chairperson
Mallee Sexual Assault Unit Inc.
144 Lime Ave
MILDURA VIC 3500

Report on the Audit of the Financial Report

Opinion

We have audited the financial report of the Mallee Sexual Assault Unit Incorporated, which comprises the statement of financial position as at 30th June 2020, the statement of comprehensive income and statement of cash flows for the year 30th June 2020, and the notes to the financial statements, including a summary of significant accounting policies, and the responsible officer's declaration.

In our opinion the financial report of Mallee Sexual Assault Unit Incorporated has been prepared in accordance with Division 60 of the *Australian Charities and Not-for-profits Commission Act 2012*, including:

- (a) Giving a true and fair view of the registered entity's financial position as at 30th June 2020 and of its financial performance for the year 30th June 2020; and
- (b) Complying with Australian Accounting Standards and Division 60 of the *Australian Charities and Not-for-profits Commission Regulation 2013*.

Basis for Opinion

We conducted our audit in accordance with Australian Auditing Standards. Our responsibilities under those standards are further described in the *Auditor's Responsibilities for the Audit of Financial Reports*. We are independent of the registered entity in accordance with the ethical requirements of the Accounting Professional and Ethical Standards Board's APES 110 *Code of Ethics for Professional Accountants* (the code) that are relevant to our audit of financial reports in Australia. We have also fulfilled our other ethical responsibilities in accordance with the code.

We believe that the audit evidence we have obtained is sufficient and appropriate to provide a basis for our opinion.

www.one2oneadvisers.com.au

E: admin@one2oneadvisers.com.au

T: (03) 5021 3355 F: (03) 5021 3131 ABN: 32 148 192 287

Mildura Business Centre 148-150 Pine Avenue Mildura Vic. 3500

POSTAL: P.O. Box 3199 Mildura Vic. 3502

Auditor's Responsibilities for the Audit of the Financial Report

Our objectives are to obtain reasonable assurance about whether the financial report as a whole is free from material misstatement, whether due to fraud or error, and to issue an auditor's report that includes our opinion. Reasonable assurance is a high level of assurance but is not a guarantee that an audit conducted in accordance with Australian Auditing Standards will always detect a material misstatement when it exists. Misstatements can arise from fraud or error and are considered material if, individually or in the aggregate, they could be reasonably be expected to influence the economic decisions of users taken on the basis of the financial report.

As part of the audit in accordance with the Australian Auditing Standards, we exercise professional judgement and maintain professional skepticism throughout the audit. We also:

- Identify and assess the risk of material misstatement of the financial report, whether due to fraud or error, design and perform audit procedures responsive to those risks, and obtain audit evidence that is sufficient and appropriate to provide a basis for our opinion. The risk of not detecting a material misstatement resulting from fraud is higher than for one resulting from error as fraud may involve collusion, forgery, intentional omissions, misrepresentations, or the override of internal control.
- Obtain an understanding of internal control relevant to the audit in order to design audit procedures that are appropriate in the circumstances, but not for the purpose of expressing an opinion on the effectiveness of the registered entity's internal control.
- Evaluate the appropriateness of accounting policies used and the reasonableness of accounting estimates and related disclosures made by the registered entity.
- Conclude on the appropriateness of the registered entity's use of the going concern basis of accounting and, based on the audit evidence obtained, whether a material uncertainty exists related to events or conditions that may cast significant doubt on the registered entity's ability to continue as a going concern. If we conclude that a material uncertainty exists, we are required to draw attention in our auditor's report to the related disclosures in the financial report or, if such disclosures are inadequate, to modify our opinion. Our conclusions are based on the audit evidence obtained up to the date of our auditor's report. However, future events or conditions may cause the registered entity to cease to continue as a going concern.
- Evaluate the overall presentation, structure and content of the financial report, including the disclosures, and whether the financial report represents the underlying transactions and events in a manner that achieves fair presentation.

We communicate with the responsible entity regarding, among other matters, the planned scope and timing of the audit and significant audit findings, including any significant deficiencies in internal control that we identify during our audit.

A handwritten signature in black ink, appearing to be 'JA' or similar, written in a cursive style.

Robert Court CPA
12th November 2020

One2one Accountants and Business Advisers
148-150 Pine Avenue,
Mildura Vic 3500 ,

MALLEE SEXUAL ASSAULT UNIT INCORPORATED

INCOME STATEMENT FOR THE YEAR ENDED 30 JUNE 2020

	Note	2020 \$	2019 \$
Revenue	2	9,150,741	8,435,608
Employee benefits expense		(5,199,899)	(4,443,765)
Administration & operating expenses		(1,945,820)	(2,409,416)
Depreciation & amortisation expenses		(113,326)	(100,032)
Interest expense		(20)	(66)
<i>Profit before income tax expense</i>		<u>1,891,676</u>	<u>1,482,329</u>
<i>Income tax expense</i>		-	-
<i>Profit from operations</i>		<u>1,891,676</u>	<u>1,482,329</u>

The accompanying notes form part of these financial statements.

1.

MALLEE SEXUAL ASSAULT UNIT INCORPORATED

BALANCE SHEET FOR THE YEAR ENDED 30 JUNE 2020

	Note	2020 \$	2019 \$
Current Assets			
Cash and cash equivalents	4	7,917,185	5,598,665
Trade and other receivables	5	84,078	32,345
Total Current Assets		<u>8,001,263</u>	<u>5,631,010</u>
Non-Current Assets			
Establishment Fees		2,295	3,062
Property, plant & equipment	6	3,641,315	3,633,913
Total Non-Current Assets		<u>3,643,610</u>	<u>3,636,975</u>
Total Assets		<u>11,644,873</u>	<u>9,267,985</u>
Current Liabilities			
Trade and other payables	7	944,151	813,609
Short term provisions	8	995,940	712,955
Total Current Liabilities		<u>1,940,091</u>	<u>1,526,564</u>
Non-Current Liabilities			
Long term provisions	8	153,560	81,875
Borrowings	9	10	10
Total Non-Current Liabilities		<u>153,570</u>	<u>81,885</u>
Total Liabilities		<u>2,093,661</u>	<u>1,608,449</u>
Net Assets		<u>9,551,212</u>	<u>7,659,536</u>
Equity			
Retained earnings	10	9,551,212	7,659,536
Total Equity		<u>9,551,212</u>	<u>7,659,536</u>

The accompanying notes form part of these financial statements.

2.

MALLEE SEXUAL ASSAULT UNIT INCORPORATED

CASH FLOW STATEMENT FOR THE YEAR ENDED 30 JUNE 2020

	Note	2020 \$	2019 \$
Cash Flows From Operating Activities			
Operating grants receipts		8,961,846	8,343,355
Payments to suppliers and employees		(6,660,528)	(6,606,312)
Interest received		4,775	8,435
Other income		148,692	391,423
Net cash provided by operating activities	15a	<u>2,454,785</u>	<u>2,136,901</u>
Cash Flows From Investing Activities			
Purchase of property, plant & equipment		(224,901)	(119,549)
Proceeds from sale of property, plant & equipment		88,636	
Net cash provided by (used in) investing activities		<u>(136,265)</u>	<u>(119,549)</u>
Cash Flows From Financing Activities			
Proceeds of borrowings		-	-
Repayment of borrowings		-	(2,099,990)
Net cash used in financing activities		<u>-</u>	<u>(2,099,990)</u>
Net increase in cash held		<u>2,318,520</u>	<u>(82,638)</u>
Cash at beginning of year		5,598,665	5,681,303
Cash at end of year	15b	<u>7,917,185</u>	<u>5,598,665</u>

The accompanying notes form part of these financial statements.

3.



Health



www.msau-mdvs.org.au

MILDURA

144-148 Lime Avenue, Mildura, VIC 3500
PO Box 1373, Mildura VIC 3502
Ph: (03) 50255400
Email: info@msau-mdvs.org.au

SWAN HILL

14-18 McCallum Street, Swan Hill, VIC 3585
PO Box 1641, Swan Hill VIC 3585
Ph: (03) 50331786
Email: info@msau-mdvs.org.aup