



MALLEE SEXUAL ASSAULT UNIT
MALLEE DOMESTIC VIOLENCE SERVICES

ANNUAL REPORT 2018

CONTENTS

VISION STATEMENT..... 3

MISSION STATEMENT..... 3

AIMS AND OBJECTIVES..... 4

MALLEE SEXUAL ASSAULT UNIT INC. 4

MALLEE DOMESTIC VIOLENCE SERVICES 4

PRESIDENT’S REPORT 5

CHIEF EXECUTIVE OFFICER’S REPORT 7

INDIGENOUS FAMILY VIOLENCE REGIONAL ACTION GROUPS 10

NSW DOMESTIC VIOLENCE FUNDING 10

IMPROVING HEALTH AND WELLBEING OUTCOMES FOR PEOPLE AFFECTED BY SEXUAL ASSAULT 11

THE ORANGE DOOR 12

FAMILY VIOLENCE LEGAL REPORT 13

RISK ASSESSMENT AND MANAGEMENT PANEL (RAMP) REPORT 15

MALLEE FAMILY VIOLENCE EXECUTIVE (MFVE) REPORT 18

SERVICES – MALLEE SEXUAL ASSAULT UNIT INC. (MSAU) 21

SERVICES – MALLEE DOMESTIC VIOLENCE SERVICES (MDVS) 22

SERVICE AREA..... 24

PROGRAMS 25

MALLEE DOMESTIC VIOLENCE SERVICES STATISTICAL DATA 27

MALLEE SEXUAL ASSAULT UNIT INC. STATISTICAL DATA..... 28

FINANCIAL REPORTS 28



OUR VISION

To be recognised as the national leader in the prevention of sexual assault and domestic violence and the providers of services of excellence to victims/survivors of crime.

OUR MISSION

To reduce the prevalence and impact of sexual assault and family violence in the Mallee through partnerships which raise community awareness and undertake preventative and early intervention strategies and provide specialist and coordinated care valued by survivors of sexual assault and family violence, meeting safety needs and facilitating their empowerment, dignity and reintegration into communities of choice.



AIMS AND OBJECTIVES

MALLEE SEXUAL ASSAULT UNIT INC.

Mallee Sexual Assault Unit Inc./Mallee Domestic Violence Services aim to provide direct services to victims/survivors of sexual assault and victims of family violence in the context of their family and other support systems.

Services include crisis care responses, counselling, casework, advocacy, referral and group work. Other work undertaken include the development and participation in a range of educational and training strategies for relevant practitioners and communities of interest.

- To provide timely and appropriate responses to recent and past victims/survivors of sexual assault.
- To provide education, training and consultation to relevant individuals and services to facilitate meeting the broader needs and concerns of victims/survivors of sexual assault and family violence.
- To develop and participate in broad community education strategies that work towards the prevention and early identification of sexual assault and family violence.
- To embed an organisational culture of child safety, ensuring processes are in place for responding to and reporting suspected child abuse. MSAU are committed to embedding a focus on child safety by placing children's rights at the forefront of the organisation.

MALLEE DOMESTIC VIOLENCE SERVICES

Mallee Domestic Violence Services aims to provide direct services to victims of family violence and significant others. Services include timely crisis care response, emergency accommodation (inclusive of a fully accessible disability property) counselling and advocacy services, referrals for appropriate support and group work. This service aids victims fleeing violent situations and many children who witness and experience family violence. Other work undertaken includes the development and implementation of education and training programs for professional groups, communities of interest and many school communities.

- The provision of support and assistance, through crisis and outreach services to people experiencing family violence.
- Primary prevention services aimed at the community in general by means of focused education and media campaigns and secondary prevention through the provision of male behaviour change programs and programs targeted at children and young people.
- Recovery response through the provision of support groups and other interventions to assist in recovery from trauma and grief experienced by those affected by family violence.
- To embed an organisational culture of child safety, ensuring processes are in place for responding to and reporting suspected child abuse. MDVS are committed to embedding a focus on child safety by placing children's rights at the forefront of the organisation.



PRESIDENT'S REPORT

On behalf of the Committee of Management, it is my great pleasure to present the Annual Report for the year 2017 – 2018.

Mallee Sexual Assault Unit Inc./Mallee Domestic Violence Services is highly regarded across the sector and community.

The Committee of Management acknowledges the exceptional level of commitment by staff in providing high quality services to victims / survivors of sexual assault and domestic violence, 24 hours a day 7 days a week. Their commitment to best practice ensures the high quality of services for our clients.

Governance

The organisation has adopted an all-inclusive Strategic Plan to drive the vision and mission of the organisation throughout the next five years.

The organisation incorporated a planning for effectiveness approach to articulate the organisation's mission and purpose and developed an action plan for the execution of our determined aims and objectives.

Some of the key objectives include:

- Continual sourcing of additional resources towards addressing the ever-increasing demand for client services. Which includes the purchase of the property at 48-50 Deakin Avenue, Mildura situated in the CBD/legal/banking district of Mildura.
- The provision of many professional training and community education programs across North West Victoria and the border communities of New South Wales.
- Community awareness programs for the diverse multi-cultural communities of the Mallee Region.

The Committee of Management also acknowledges our CEO Joanne Sheehan-Paterson for her enduring enthusiasm and drive. Her vision has ensured Mallee Sexual Assault Unit Inc./ Mallee Domestic Violence Services remains at the forefront of innovative practice and is a role model for other services. I also acknowledge my fellow Committee of Management members who volunteer their time and expertise in their respective fields, my sincere gratitude for your efforts and support.

The Committee of Management would also like to acknowledge and extend thanks to the Department of Health and Human Services Victoria and New South Wales, Far West Area Health Services New South Wales and the Department of Family and Community Services for their continued funding and support. I also acknowledge our sincere gratitude to other organisations and individuals across the Mallee and border communities of New South Wales who contribute and support the services.



The Committee of Management and staff wish to acknowledge partners of the Multi Disciplinary Centre: Victoria Police, Child Protection Victoria, Sunraysia Community Health Services and the Murray Mallee Community Legal Centre.

It is an enduring privilege to be involved with an organisation that provides critical care and support to people who have been traumatised by the crisis of sexual assault and family violence.

Dennis McLaughlan
President
Committee of Management
Mallee Sexual Assault Unit Inc.
Mallee Domestic Violence Services

COMMITTEE OF MANAGEMENT MEMBERS

Period 2017-2018

Danielle DOUGHERTY	Maira McGEE
Simone HEALD (until 19/06/2018)	Lorraine THIELE
Dennis McLAUGHLAN (President)	Bill PANAGIOTAROS
Peter MAILES	Paul AVERY

CHIEF EXECUTIVE OFFICER'S REPORT

Mallee Sexual Assault Unit and Mallee Domestic Violence Services provide essential and vital services to the communities of the Northern and Southern Mallee regions in Victoria and the border communities of New South Wales and South Australia.

The Mallee Sexual Assault Unit continues to provide specialist 24-hour crisis care services, counselling, advocacy, support and therapeutic treatment services for children under 18 years with problem sexualised behaviours, and sexually abusive behaviours.

Outreach counselling clinics were conducted throughout the region, including Robinvale, Swan Hill, Ouyen, Dareton, Wentworth, Balranald, Kerang, Sea Lake, Wycheproof, Manangatang, Donald, Birchip, Charlton, Nyah, Lake Boga and the Mallee Track districts.

The Mallee Domestic Violence Services responded to the needs of people who had experienced or witnessed domestic/family violence throughout the Mallee regions in Victoria and the border communities of New South Wales and South Australia.

Services provided include counselling, crisis care, emergency and transitional accommodation, support, advocacy, group programs and preventative education programs.

Throughout 2017-2018 the organisation delivered prevention and education programs about sexual assault and family violence in many schools throughout the region.

Many group programs were conducted during 2017-2018, including the SeaChange Program for women and adolescents, and the children's Music Therapeutic Program, and the Mental, Emotional, Social Health (MESH), Therapeutic Program

The Mallee Sexual Assault Unit in conjunction with Victoria Police and Child Protection Victoria operates a specialist Multi-Disciplinary Centre (MDC). This centre is a 24-hour sexual assault centre where persons who have experienced sexual assault receive a comprehensive response to their needs by Police, Sexual Assault counsellors, Forensic Medical practitioners and Child Protection practitioners. This facilitates a collaborative, timely intervention in situations where sexual assault or child abuse have been identified.

The Multi-Disciplinary Centre has specialist police investigative facilities, forensic medical suite and specialist sexual assault support services, which provide best practice quality care for victims of crime. The Mallee Sexual Assault Unit is proud of the collaborative working partnership with the MDC Unit, Victoria Police and Child Protection Services in Mildura.

Sunraysia Community Health Services and the Murray Mallee Community Legal Centre work collaboratively in the Multi-Disciplinary Centre (MDC) These additional services have provided a Community Health Nurse Specialist and Specialist Family Violence Legal Services for clients of the MDC. The MDC has received a national award in recognition of the high level of service to victims of sexual assault and child abuse.

In the Southern Mallee Centre in Swan Hill, our partners of the Murray Mallee Community Legal Centre and Mallee Accommodation Support Program and Child First are co-located with our services to provide an integrated service response for clients in the Southern Mallee of Victoria and the border communities of New South Wales.

During 2017-2018 the organisation has worked collaboratively with many community service organisations, the Department of Health and Human Services of Victoria and New South Wales, and Family Safety Victoria

The organisation has participated in state-wide and national reference groups and many research projects. Mallee Sexual Assault Unit fully supports the important work of the Royal Commission into Institutional Responses to Child Sexual Abuse and is working collaboratively to implement their recommendations.

We have provided counselling and advocacy for victims/survivors of childhood sexual abuse, provided support and assistance to victims writing submissions, and assistance to victims who appeared before the Royal Commission.

Mallee Domestic Violence Services continues to work with the Victorian Integrated Family Violence Strategy. This approach ensures improved integrated services throughout the state and has increased the capacity to meet service demands.

The Strategy seeks to reduce the levels of re-victimisation and re-offending by providing people who have experienced family violence with the support they need, combining justice responses with human services approaches and programs to change the behaviour of those who use violence.

In May 2018 one of the most significant recommendations from the Family Violence Royal Commission was the establishment of the Support and Safety Hub (The Orange Door) for the Mallee. The Mallee being one of the few initial support and Safety Hubs in Victoria. Mallee Sexual Assault Unit and Mallee Domestic Violence Services is a key partner in this initiative. The Orange Door is a new way for women, children and people experiencing family violence and families who need help with the care and wellbeing of their children to access the support they need.

The Orange Door is for men who need to change their behaviour, the Orange Door is a new way for men to access services to be better partners, fathers and family members. This is a free service. The Orange Door welcomes people of any age, gender, sexuality, culture and ability.

The Orange Door works with local Aboriginal services and communities, multi-cultural services, LGBTI and disability services to meet the diverse needs of individuals and families.

The Orange Door will connect and refer to services that are needed in order to keep families safe. The Orange Door provides services to people living in the Mallee, which includes Buloke, Gannawarra, Mildura and Swan Hill shires.



During 2017-2018 the organisation has received a significant increase in funding to address the ever-increasing demand for services and to implement the important reforms from the Royal Commission into Family Violence.

The C.E.O. of the organisation is the Chair of the Mallee Family Violence Executive (MFVE). Our vision is “for women and children to live free from violence in Victoria”. The MFVE engages in early intervention and prevention strategies to prevent future demand for violence related services.

In April 2016 the 227 Recommendations were released by the First Royal Commission into Family Violence in Victoria. The organisation in collaboration with the Mallee Family Violence Executive and the Department of Health and Human Services and the Department of Premier and Cabinet and the newly created entity Family Safety Victoria, have diligently worked on the implementation of the recommendations.

During 2017-2018 the C.E.O. of MSAU-MDVS has been the Chair of the National Association of Services Against Sexual Violence (NASASV). The NASASV works to further the shared aims of services for those who have experienced sexual violence across the nation, with the goal of eliminating sexual violence in the community.

The organisation is officially accredited by the Quality Innovation Performance (QIP) and the Department of Health and Human Services Standards.

I would like to sincerely thank the Committee of Management for their loyal service, strategic direction and support during the past year.

I wish to thank all staff for their dedication, commitment and compassion and for all of their accomplishments achieved during the past year, including SOCAT, MDC Child Protection Team, Forensic Physicians, MDC Nurse and Murray Mallee Legal Centre team, Child First team and Financial Counsellors.

It is a privilege to work alongside committed professionals so that we can in partnership assist people who have experienced sexual assault, child abuse and family violence.

Joanne Sheehan-Paterson
Chief Executive Officer
Mallee Sexual Assault Unit Inc.
Mallee Domestic Violence Services

INDIGENOUS FAMILY VIOLENCE REGIONAL ACTION GROUPS

Indigenous Family Violence Regional Action Groups have a pivotal role in implementing community led responses that educate, prevent, respond to and reduce family violence in Aboriginal communities. The Mallee Indigenous Family Violence Regional Action Group are an inclusive mechanism for the Victorian Aboriginal community to develop local responses to family violence matters, ensuring they are responsive and culturally relevant to Aboriginal individuals, families and communities in Victoria.

Part of our administration Mallee IFVRAG Manages the use of IFVRAG Discretionary Funds in accordance with the requirements for which they are intended as well as Managing and support the Community Initiatives Fund (CIF) regional process. Through the years we have built a good rapport with Mallee Sexual Assault Unit Inc. Mallee Domestic Violence Services, we have a smooth process which flows due to the rapport built and a shared understanding of Family violence in our Community.

Through the Indigenous Family Violence (IFV) Chair and Regional Coordinator, we actively participate in and strengthen partnership links with the Regional Integrated Family Violence Strategy the Mallee Family Violence Executive, Northern Mallee Family Violence Network and mainstream service providers.

Mallee IFVRAG would like to take this opportunity to thank everyone at Mallee Sexual Assault Unit Inc. Mallee Domestic Violence Services for being our auspice body as we all aim towards preventing family Violence in the Mallee our Community.

NSW DOMESTIC VIOLENCE FUNDING

In 2016-17 MDVS-MSAU entered into a partnership arrangement with MASP to deliver a domestic violence response service to residents of Wentworth and Balranald LGAs in NSW.

Funded by NSW Family & Community Services, the Domestic Violence Enhanced Response (DVRE) now allows for an after-hours crisis response to victims of domestic violence who are unable to remain in their homes due to safety concerns.

The after-hours response element is being provided by MDVS-MSAU while MASP provides the ongoing support to dv clients returning home under the Staying Home Leaving Violence (SHLV) model. The enhancement funding is for two years initially and will be reviewed by the NSW government in terms of impact and effectiveness.



IMPROVING HEALTH AND WELLBEING OUTCOMES FOR PEOPLE AFFECTED BY SEXUAL ASSAULT

In October 2015, SCHS appointed a new Multi-Disciplinary Centre (MDC) nursing position to provide health support to clients accessing the Mallee Sexual Assault Unit and Domestic Violence Service. The service is available to anyone who has ever experienced sexual assault or any of their non-offending family members who may have been affected. Adults, young people and children can all access the service.

In order to be sensitive to the needs of the clients, the position has been filled by a female nurse with extensive experience supporting individuals to address their overall physical and emotional health and wellbeing needs. In delivering the service the nurse identifies the needs of her clients, provides care planning and makes referrals to other services as appropriate for ongoing support. If required, the nurse can also provide short to medium term care and access to timely health and wellbeing information and education. She can also work with affected families to provide a safe and stable environment for family member(s) who have experienced sexual assault.

After a considerable consultation period, in April 2016 the position commenced working from the Multi-Disciplinary Centre at the Centre Against Sexual Assault. This allows the nurse to work closely with other service providers within the MDC partnership, improving the working relationships and health outcomes for clients.



THE ORANGE DOOR

The Victorian Royal Commission into Family Violence, and the Government's Roadmap for Reform: Strong Families, Safe Children recommended the establishment of Support and Safety Hubs to make it easier for people to find the services they need.

In November 2016 the Victorian Government committed to establishing Support and Safety Hubs across Victoria. Of the record \$2.6 billion the Victorian Government has invested to end family violence, \$448.1 million over four years will go towards establishing and operating the Support and Safety Hubs. The Orange Door is how Hubs will be known and branded.

The Orange Door will be established across Victoria. The first five sites opened in 2018, and by 2021, The Orange Door will be operating in each of the 17 DHHS areas across Victoria.

What is The Orange Door?

The Orange Door is a new way for women, children and young people who are experiencing family violence or need assistance with the care and wellbeing of their children to access the services they need to be safe and supported.

The Orange Door will also hold perpetrators to account by planning interventions to address the risk they pose and challenging their controlling, violent and abusive behaviour.

The Orange Door will keep the whole family in view and provide a more visible contact point for family violence services, family services and men's services, with expert support tailored to each family member's needs.

The Orange Door provides:

- A more visible contact point so that people know where to go for support.
- A connection to a wide range of supports across the spectrum of prevention, early intervention and response.
- A coordinated and integrated service response for women, children and men where practitioners draw on shared expertise.
- An immediate response for people in crisis (during business hours) by linking them to specialist services, medical treatment and care, accommodation and practical assistance.
- Specialist support and tailored advice for victim survivors, families and children, with a strong focus on perpetrator accountability, based on the best available information and latest risk assessment tools.

The Orange Door is a key part of the ongoing reform of the family violence and children and family service systems. These reforms aim to strengthen responses for victim survivors of family violence and create better outcomes for children and families, while also addressing perpetrator behaviour, holding them to account and improving access to behaviour change services.



The Mallee Orange Door has been in operation since 31 May 2018 and is a partnership between:

- Department of Health and Human Services
- Family Safety Victoria
- Mallee Sexual Assault Unit and Mallee Domestic Violence Service
- Mallee Accommodation and Support Program
- Mallee District Aboriginal Services
- Sunraysia Community Health Services



FAMILY VIOLENCE LEGAL REPORT

The second year of our collaboration with the MSAU-MDVS to deliver on-site legal services for women experiencing family violence has seen a steady growth in the services provided. The Family Violence Legal Unit (FVLU) of the Murray Mallee Community Legal Service operates under the Commonwealth funded Women's Safety Package program to provide a holistic, wrap-around legal service to women experiencing or escaping from family violence and is co-located at the Mallee Domestic Violence Service in both Mildura and Swan Hill.

The FVLU team was re-invigorated during the last quarter of the year with the appointment of two new family violence solicitors – in Mildura and Swan Hill, but we also said goodbye to coordinator and social worker Janet Bonython, who left the service to work directly with the Mallee Domestic Violence Service. Despite our loss, it's pleasing that Janet's holistic approach and calm and supportive manner continues to be available to the vulnerable women in our community. Solicitor Blessing Keabilwe has been based at the Mildura DV Service since June 2018 and Solicitor Emily Craig moved to the family violence role in Swan Hill, where she is now located half time at the Domestic Violence Service and half time at the Mallee Family Care Office.

Mallee Family Care's financial counsellors have also continued to provide a much needed service to women at both the Swan Hill and Mildura DV services for one day a week. The Financial Counselling service, funded through the Victorian Government, has a very close working relationship with the Community Legal Service as well as with the DV services, and is often able to work collaboratively with the social workers and solicitors to find resolutions for vulnerable women.



Allie Collyer and Janet Bonython – White Ribbon Day Mildura 2017

Of the 142 women we assisted:

87% were experiencing financial disadvantage
71% were aged 25-49 years
44% were from regional locations outside the main towns
8% were experiencing homelessness.
5% were Aboriginal or Torres Strait Islander

In addition to provision of legal support and advice our Community Legal Education Officer Allie Collyer and the solicitors delivered nineteen community legal education sessions and Janet, Allie and the solicitors participated in numerous training, networking, data collection and advocacy activities throughout the year. Our strong partnership with the MSAU-MDVS continues to empower our community to support women facing family violence and to advocate and fight for change.

Ann Killen
General Manager,
Murray Mallee Community Legal Service



RISK ASSESSMENT AND MANAGEMENT PANEL (RAMP) REPORT

“A Risk Assessment Management Panel (RAMP) is a formally convened meeting of key agencies and organizations at a local level that conducts a multi-agency risk assessment of individuals who are at high risk of serious harm from family violence and develops coordinated action plans to mitigate risk. RAMPs are intended to increase the safety of women and children and increase perpetrator accountability for the violence”

Domestic Violence Resource Centre Victoria (DVRCV), 2016

RAMP's are not a substitute for any existing service system's but aim to enhance service responses to high-risk victim-survivors of family violence. Across Victoria, there are 18 funded RAMPs which are situated at each Department of Health and Human Services (DHHS) site. Each RAMP meet's once a month at a minimum to share information in relation to risk assessment and take action in relation to risk management of victim-survivors who have been assessed as being at “serious risk” of harm from family violence.

“A Victorian Government Memorandum of Understanding to implement RAMPs has been signed by the Department of Health and Human Services, Victoria Police and the Department of Justice and Regulation.

The commitment of Community Service Organizations and associate members who are not covered by the Memorandum of Understanding will be covered by local agreements that describe the role and responsibilities of RAMP participants and support the functions of the RAMPs”

Victorian Risk Assessment and Management Panel Program: Operational Guidelines, page 13, 2016

The Mallee Risk Assessment Management Panel:

The Mallee RAMP went operational in June 2016. The panel consists of two Co-Chairs - one from the specialist family violence agency (MSAU-MDVS) and one from Victoria Police, a Coordinator, Core Members, and Associate Members. The Co-Chairs are the Chief Executive Officer (CEO) of Mallee Sexual Assault Unit Inc. Mallee Domestic Violence Service and a Detective Senior Sergeant of Victoria Police.

The Coordinator is employed by MSAU-MDVS and is supported by a deputy Coordinator who acts as a RAMP support worker and substitutes the RAMP Coordinator when necessary. The Mallee RAMP is held twice a month, once in Mildura and once in Swan Hill, due to the vast geography of the district. The core membership comprises of senior managers from the following organizations:

- Child First Mallee Accommodation and Support Program (MASP)
- Community Corrections – Department of Justice and Regulation
- Child Protection – Department of Health and Human Services (DHHS)
- Office of Housing – Department of Health and Human Services (DHHS)
- Drug and Alcohol Services – Sunraysia Community Health Services (SCHS) and Swan Hill District Health (SHDH)
- Mental Health Services – Ramsay Health and Bendigo Health
- Men's Behaviour Change Program (MBCP) – Sunraysia Community Health Services (SCHS)
- Specialist Family Violence Service – Mallee Sexual Assault Unit Inc. Mallee Domestic Violence Service (MSAU-MDVS)

- Victoria Police
- Aboriginal Community Controlled Organization (ACCO) – Mallee District Aboriginal Services (MDAS) for Indigenous specific cases

Associate members include representatives from any other organization or agency that have particular knowledge of a case. These members are considered to play a vital role in supporting RAMP to reduce the level of risk to the victim-survivor. Associate members attend RAMP on an “as needed” basis to present information relevant to risk assessment and to discuss risk management planning.

RAMP Information Sharing System (RISS)

RISS is the online information exchange and collection portal for everything RAMP related which has been in use since early 2017. RISS is the mechanism used for making/receiving a RAMP referral; collecting data on victim-survivors, children and perpetrators; scheduling RAMP meetings; accessing the RAMP agenda; recording and distributing RAMP meeting minutes; assigning RAMP actions to services; updating members on any necessary information following a RAMP meeting; transferring cases to other RAMP areas across Victoria and opening/closing RAMP referrals dependent on eligibility. RISS is only accessible to RAMP Coordinators, RAMP Co-Chairs, Core members and Associate members with different levels of access dependent on the individual’s involvement in the case.

RAMP referrals:

2017-2018 financial year:

59 referrals received to RAMP via RISS. This is a significant decrease in the number of referrals received in comparison to the 2016-2017 data, which included 112 RAMP referrals for the Mallee region. Some reasons behind the decrease in referrals to RAMP within the last 12 months can be accounted to:

- Increased perpetrator accountability by Police in terms of charges for family violence offences and perpetrators serving custodial sentencing for these offences
- Increased service accountability and collaborative practice to enhance safety planning for victim-survivors and children, decreasing the risk threshold.

RAMP Coordinators engaging in regular secondary consults with case management service providers and agencies to support the mitigation of risk in the first instance, alongside supporting the enhancement of understanding the “serious threat” threshold, implementation of safety mechanisms/plans and enacting a coordinated response between relevant services. This mitigates the risk for the victim-survivor/s which then reduces the need for a RAMP referral.

Re-referrals to RAMP:

- There have been eight re-referrals/re-opened cases to RAMP from 1 July 2017 – 30 June 2018.
- Seven of these had the same victim-survivor and same perpetrator.
- One of these had the same perpetrator with different victim-survivors.

Aboriginal / Torres Strait Islander (ATSI) identification:

- 23 out of the 59 (39%) referrals to RAMP involved a party who identified as ATSI. Of these:
- 15 (25%) referrals met criteria for RAMP
- Eight (13%) did not meet criteria for RAMP



- Out of the 15 referrals that met criteria:
- Nine of these involved victim-survivors who identifies as ATSI
- 12 involved perpetrators who identified as ATSI

Culturally and Linguistically Diverse (CALD) identification:

- Five out of the 59 (8%) referrals to RAMP involved a party who identified as CALD. Of these:
- Three (5%) met criteria
- Two (3%) did not meet criteria
- Out of the three that met criteria:
- Two of these involved victim-survivors who identified as CALD
- Three of these involved perpetrators who identified as CALD

Scott Olsen
Mallee RAMP Coordinator

Lucy Parr
Deputy RAMP Coordinator / RAMP support worker – Mallee



MALLEE FAMILY VIOLENCE EXECUTIVE (MFVE) REPORT

During a period of significant reform within not only the Family Violence sector, but across the human services, the Mallee Family Violence Executive (MFVE) has continued to strive for effective and enduring change by showing committed leadership and strong representation across the Mallee.

After identifying a critical need to ensure the cross-sectional representation in the MFVE, the last twelve months has seen the group expand its membership to include an increased important local sector leaders. It is also important to acknowledge a change within the coordinator roles, with Metaxia Tsoukatos knowledge, drive and commitment being recognized with her appointment as the manager of Mallee Orange Door.

Strategic Plan 2018-2020

The MFVE undertakes strategic planning at regular intervals to ensure its approach to family violence service system integration remains relevant and responsive to local area priorities, including emerging needs, and is aligned with the Victorian Government policy and best practice service directions.

Strategic planning supports MFVE to promote, within the state-wide reform agenda:

- Continued service development, integration and improvement for the Mallee;
- Workforce development across the Mallee; and
- Leadership of integration in the Mallee.

Development of the MFVE Strategic Plan 2018-20 took place over a five-month period, beginning with a special meeting of MFVE that considered the current context of reform and the strategic opportunities for MFVE. Consultations on strategic priorities and proposed actions identified at the special meeting then followed with a variety of local stakeholders during most of March 2018. The draft plan was presented to the MFVE for feedback on April 2018, and was finalized shortly after.

The MFVE Strategic Plan 2018-20 has four strategic priorities to guide family violence service system integration in the Mallee over the next phase. These strategic priorities are:

1. Leadership
2. Workforce
3. Governance
4. Integration

The MFVE Strategic Plan 2018-20 can be viewed in full at the MFVE website
<https://www.mfve.net.au/strategic-plan/>

Reform progress

Whilst there has been an enormous amount of progress made implementing the recommendations of the Royal Commission into Family Violence, a few significant announcements have stood out. These include:

- Respect Victoria being established as a new organization with a dedicated focus prevention of family violence and of all forms of violence against women;
- The Gender Equity Action Plan 2017-2020 being released;
- Amendments to information sharing legislation that enhance the ability of prescribed agencies to assess and manage the risk of violence being enacted; and
- The announcement of funding to support the establishment of new 'Core and cluster' model refuges across the State.

Network development and participation

Ensuring effective integration of service delivery and reform activities across multiple levels is a key focus of the MFVE. It is vital that efforts towards integration include commitment to partnerships at a local and statewide level, ensure work occurs across the entire service spectrum (early intervention, prevention, and response), involves multiple workforces, and delivers innovative projects that understand Mallee-specific needs. Our work in supporting the development of placed based Family Violence networks has culminated in each of the four Mallee Local Government Areas (Swan Hill, Buloke, Gannawarra, and Mildura) establishing their own network dedicated to stopping Family Violence.

As many recommendations from the Royal Commission into Family Violence have been implemented in the Mallee throughout the last twelve months, we have been able to represent the MFVE in a range of new and exciting networks and committees. These new locally delivered initiatives include the:

- Strengthening Hospital Responses to Family Violence (SHRFV) reference group;
- Refuge Redevelopment Service Integration Committee;
- Mildura Rural City Council Community Health and Wellbeing Plan Steering Committee;
- Mallee Area Men's Family Violence Intervention steering group;
- Rural and Regional Women's project (providing support and secondary consultation to CALD women in the Mallee); and
- Orange Door – Mallee.

At a state-wide level, we continue to meet regularly with other coordinators with our colleagues, as well as our peak body Domestic Violence Victoria (DVVic) and Family Safety Victoria. These meetings allow the opportunity to share information about activities taking place across the State, and to ensure that our local sharing of information aligns consistently with information being shared at a State level.

Review of regional integration committee's

The Family Violence Regional Integration Project: Strengthening the case for the future of regional integration (the Project) was led by Victoria's 13 Family Violence Regional Integration Committee's (of which the MFVE is one) in collaboration with Family Safety Victoria. The Project's purpose was to facilitate a rigorous analysis of, and provide solid recommendations for, the role of regional integration in the current family violence system reform context. Consultation took place between February and September 2018, with the report and recommendations expected to be released in October 2018. It is envisaged that major piece of work will deliver findings that support the strengthening of the MFVE's work within the State wide context, and seek to elevate the status of these committee's as local system experts and key mechanism's to support implementation of the Royal Commission into Family Violence's recommendations.

Workforce development and training

Workforce development across the Mallee has remained at the forefront of the MFVE's strategic thinking. Our ability to enhance and strengthen both the size and skills of the family violence workforce across multiple sectors will significantly influence the impact of the reforms. During the last twelve months we have focused on the delivery of Identifying Family Violence (IFV) training in the Mallee as core training for the community service sector. This has seen an increase in funding to allow for the delivery of training to 440 people in the 2018-19 year.

As a part of the Rural and Regional Project, we have supported inTouch – Multicultural Centre Against Family Violence to deliver training in the Mallee to over 60 members of the workforce. This has seen an increased knowledge base for people working with women from CALD backgrounds who are experiencing family violence.

The MFVE identified a critical need to target training towards working with men who use family violence. Because of this focus MDVS and Swinburne University co-facilitated training to local Child Protection workforces on ‘tilting’ practice in an effort to understand and reduce men’s use of violence. **No To Violence** also delivered training to the Mallee workforce on how to work well with men who use violence. These professional development opportunities are seen as important tools to better equip our community to reduce the prevalence of family violence.



SERVICES – MALLEE SEXUAL ASSAULT UNIT INC. (MSAU)

The Mallee Sexual Assault Unit is part of a multi-disciplinary centre which provides 24-hour assistance to victims of sexual assault. The 24-hour Sexual Assault Centre includes a specially trained police unit, the Sexual Offences and Child Abuse Investigation Team (SOCIT), the Mallee Sexual Assault Unit (MSAU) and the Child Protection Team (DHHS).

The SOCIT is staffed by detectives whose specific role is to investigate sex offences and child abuse and provide support to victims.

The Child Protection Team is staffed by specialised practitioners whose specific role is to investigate allegations of physical and/or sexual abuse against children. These investigations may be conducted jointly with SOCIT.

OTHER SERVICES INCLUDE:

- 24 Hour crisis care/forensic medical services.
- Information regarding medical and legal rights.
- Counselling and support for victims and significant others.
- Advocacy and referrals to other agencies.
- Interpreter services where necessary.
- Therapeutic treatment services for problem sexualised behaviours.
- Safe accommodation if required.
- Ongoing support throughout the legal process.
- Community / school education programs.
- Support groups.
- Education and training for professional and community groups.
- Outreach clinics within the Northern/Southern Mallee region and the border communities of New South Wales.

SEXUALLY ABUSIVE BEHAVIOURS TREATMENT SERVICES (SABTS)

SABTS provides counselling and support for children and young people up to the age of 17 who display problem or sexually abusive behaviours. Mallee Sexual Assault Unit Inc. conducts thorough assessments with children and young people. Our model accommodates the developmental needs of the child or young person, including those with learning and language difficulties, developmental delays and varying levels of intellectual ability.

Involvement of the family in treatment is essential in producing the best outcome for the child or young person. To support a child or young person's efforts to change their behaviours, the parents or carers need to understand the sexual abusive behaviour cycle, and the emotional states and circumstances that enable the behaviour to occur, including family dynamics that might trigger the cycle.

Parents and carers need to be aware of and support the new positive coping strategies developed for the child or young person to interrupt the cycle, and they need to support the child or young person to maintain and implement those strategies. Family work is particularly important when a child or young

person is unable to remain in the family home due to the sexually abusive behaviours. Where this occurs, family reunification is a high-priority treatment goal.

When all the children involved are under 10, the behaviour is referred to as 'sexualised behaviour' or 'problem sexual behaviours' rather than 'sexually abusive behaviour'. Children under 10 are deemed by Victorian law to be unable to consent to any form of sexual activity. In addition, children under 10 cannot be held criminally responsible for their behaviour.

The SABTS program significantly reduces the likelihood of the behaviours continuing. Sexually abusive behaviours in a child or young person are not an indicator of paedophilia, and do not mean that the child or young person will go on to sexually offend as an adult.

The impact of sexually abusive behaviours on children, young people and the child or young person displaying the behaviours may be long term.

SERVICES – MALLEE DOMESTIC VIOLENCE SERVICES (MDVS)

The Mallee Domestic Violence Services offer a range of services, including the following:

- 24-Hour Crisis refuge accommodation.
- Medium Security accommodation.
- Transitional accommodation.
- Counselling services.
- Advocacy and referral to other relevant services.
- Court Support.
- Information and education about the effects of domestic violence.
- Assistance and support to re-establish the victim in the community.
- Outreach services.
- Specialist support for children who are victims or who have witnessed domestic violence.

Violence against women is widely recognised as a global problem. It is one of the least visible, but most common forms of violence, and one of the most insidious violations of human rights. It has serious impacts on the health and wellbeing of those affected and exacts significant economic costs on communities and nations.

The impacts of family violence are profound:

In 2016/17 there were 2 family violence related deaths per week in Australia.

For both women and children, family violence has extensive and often long term physical and emotional consequences. It creates homelessness, disrupts children's schooling and leads to social and economic isolation for women.

Family Violence is the abuse of power over another person. It mostly affects women and children; however, the victims can also be men.

Mallee Domestic Violence Services provides a confidential and client directed service to victims /survivors of family violence, assisting them to make informed choices regarding their situation.

We provide a 24-hour crisis response across the Mallee and border communities of New South Wales and South Australia.



Facts

- Domestic Violence is a crime.
- There are no excuses for domestic violence.
- Domestic violence occurs across all cultures and social groups.
- The victim/survivor of domestic violence are never to blame.
- While alcohol and drug abuse is often a contributing factor, it is not an excuse for the violent behaviour.
- Witnessing domestic violence can have long term and damaging emotional effect on children.

OUR OFFICES:



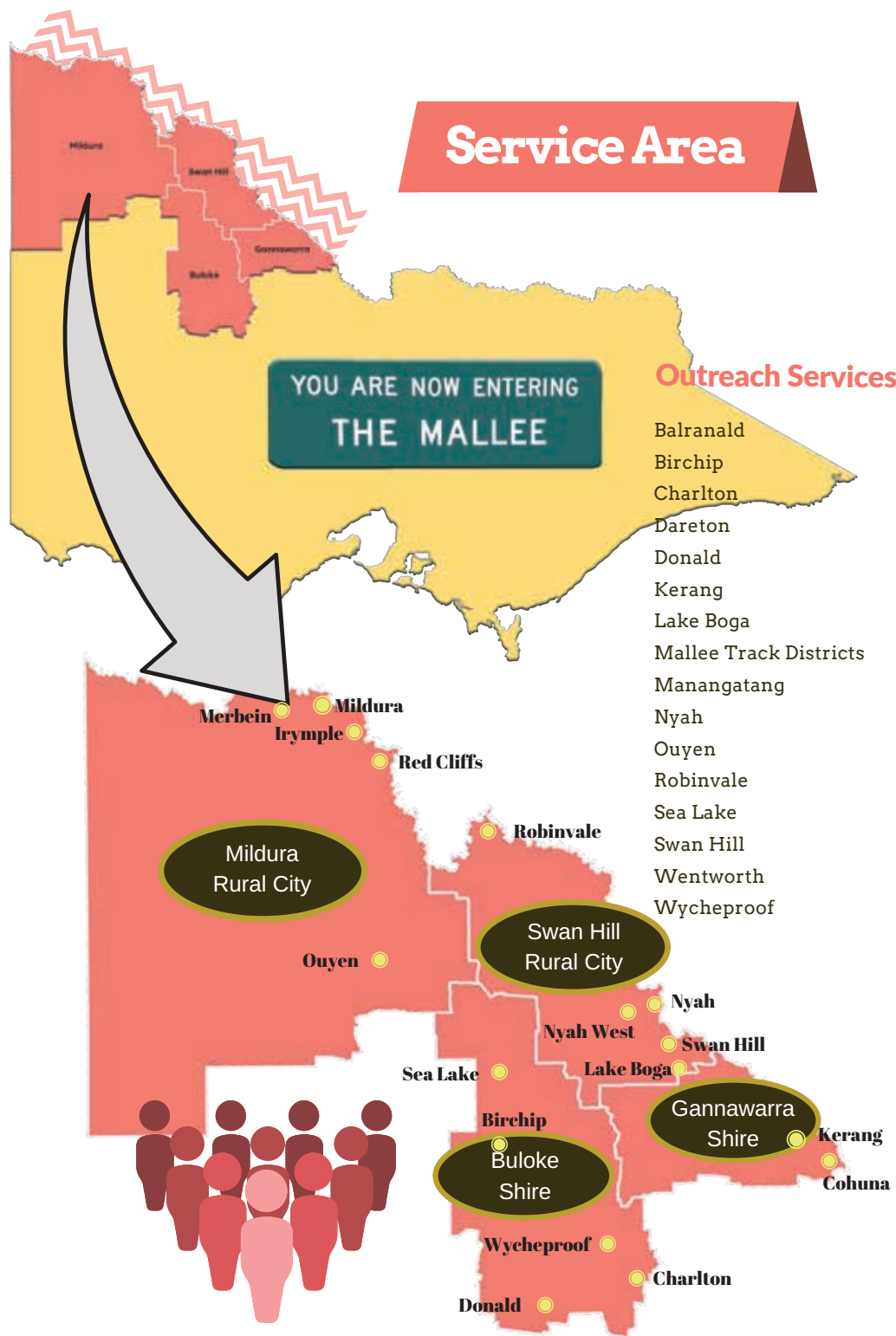
Mildura Office:
144-146 Lime Avenue



Swan Hill Office:
14-18 McCallum Street



SERVICE AREA



PERSONAL SAFETY PROGRAM (PSP)

The Personal Safety Program (P.S.P.) is aimed at Primary School age children.

Objectives of this program

- Teaches children “we all have to right to feel safe”.
- Raises awareness, teaches strategies and coping skills that can be applied to various difficult situations.

Mallee Sexual Assault Unit and Mallee Domestic Violence Service staff delivers this program in several sessions delivered at schools. The program can also be delivered in a one-on-one basis, according to needs.

SAFETY HINTS FOR ADOLESCENT RELATIONSHIPS PROGRAM (SHARP)

SHARP is a program designed by MSAU, targeting young people in years 8 and 9. It explores issues that confront young people in both their personal and school lives.

The aim of the program is to give students legal and relevant information about relationships, the main objectives are addressing sexual assault issues and violence.

The program is facilitated by a female counsellor from MSAU and a male officer from Victoria Police. The presenters will share information about their agencies and background. It is delivered in a school setting. Students are encouraged to actively participate by asking questions or seek clarification of any issues.

Issues discussed include:

- Definitions of rape and sexual assault.
 - Why children under 10 years of age cannot be charged with a crime.
 - What is the legal age of consent and the legal implications of having under age sex.
 - Stalking.
 - The penalties and consequences of being charged with a sex crime.
-

SCHOOL HOLIDAY PROGRAM

The School Holiday Program is open to all children accessing the services for children of adults receiving a service from Mallee Sexual Assault Unit Inc.

The program runs Monday to Friday through the school holidays and consists of indoor craft, games and activities, as well as occasional excursions to external activities such as cinema, bowling, mini golf. The program also incorporates educational activities such as healthy eating, safety, dental health, etc.

SEA CHANGE PROGRAM

The Sea Change Program aims to assist participants to become more assertive, increase their self-esteem and self-confidence, while enabling them to become more effective in interpersonal relationships and taking control of their lives.

The course is designed to provide an educational and motivational learning environment, encouraging group participation, while allowing individuals to explore new concepts and skills.

Objectives of the program are:

- To develop concepts of self-esteem, self-acceptance and self-reliance.
 - To assist participants to be aware of their feelings and how to appropriately express them.
 - To present concepts of positive self-talk, turning negative thinking around to assist participants to change irrational thoughts.
 - To help participants understand how skills in communication relate to building self-esteem and assertiveness.
-

SPECIAL NEEDS AWARENESS PROGRAM (SNAP)

The Special Needs Awareness Program (SNAP) is a resource for use with people with an intellectual disability of any age. Sexual abuse is ultimately an abuse of power.

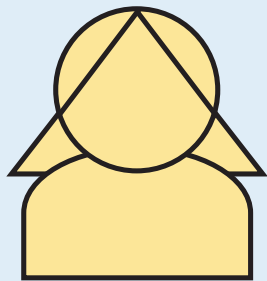
People with an intellectual disability are vulnerable to sexual abuse because of their trust in and dependency on adults and their lack of information regarding the dangers of abuse. Parents/carers caution their children about stranger dangers yet are often at a loss when it comes to protecting them from people they know and trust.

Protective Behaviours philosophy:

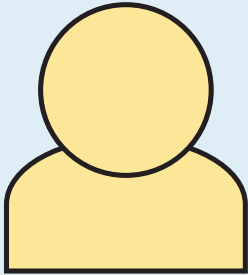
- We all own our bodies and minds. Everyone has the right to set their own boundaries to decide who, when and where their bodies are touched.
- Everyone has the right to say NO to any unwanted or unsafe touching.
- Everyone has the right to be informed of potential dangers including abuse and taught protective measures to ensure their personal safety.
- Sexual abuse is never the fault of the victim.



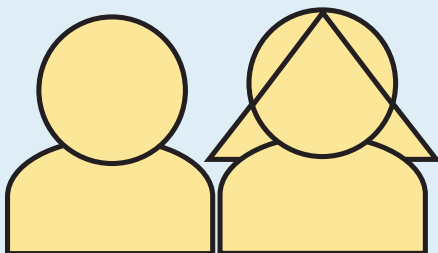
MALLEE DOMESTIC VIOLENCE SERVICES STATISTICAL DATA



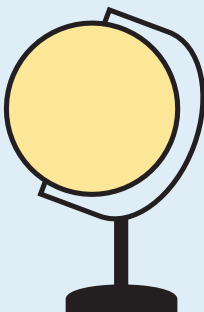
5272
Female clients



691
Male clients



623
Children under 10



Clients from
33 countries

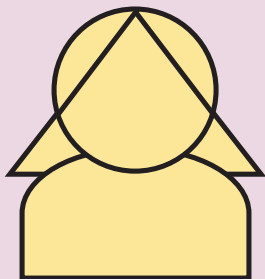


480
Family Violence Flexible
Support Packages approved



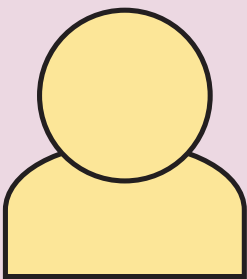
142 clients
Received legal support from
Family Violence Legal Unit

MALLEE SEXUAL ASSAULT UNIT INC. STATISTICAL DATA



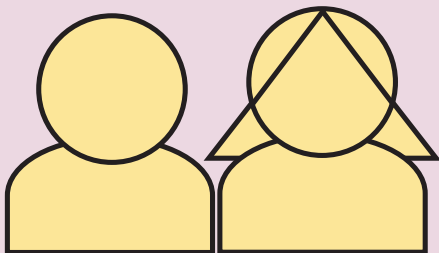
1158

Female clients



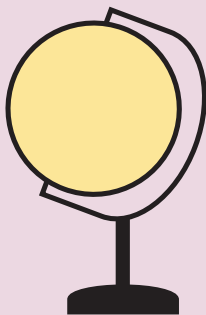
436

Male clients

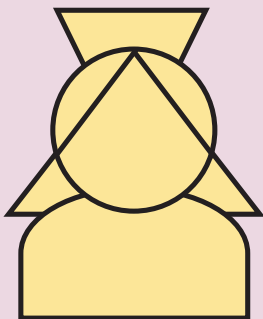


462

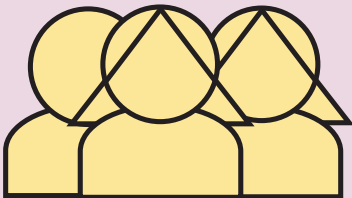
Children under 10



**Clients from
10 countries**



77 clients received support
from SCHS Nurse



233

**MDC Referrals
Child Protection / SOCIT**

personal advice you can count on



The Chairperson
Mallee Sexual Assault Unit Inc.
144 Lime Ave
MILDURA VIC 3500

INDEPENDENT AUDIT REPORT TO THE MEMBERS OF MALLEE SEXUAL ASSAULT UNIT INCORPORATED

Scope

We have audited the financial report of the Mallee Sexual Assault Unit Incorporated for the period ended 30 June 2018. The Committee is responsible for the financial report and we have conducted an independent audit of the financial report in order to express an opinion on it, to the members.

The financial report has been prepared for the purpose of fulfilling the requirements of the *Associations Incorporation Reform Act 2012 (Vic)*. We disclaim any assumption of responsibility for any reliance on this report or on the financial report to which it relates to any person other than the members, or for any purpose other than that for which it was prepared.

Our audit has been conducted in accordance with Australian Auditing Standards. Our procedures included examination, on a test basis, of evidence supporting the amounts and other disclosures in the financial report. These procedures have been undertaken to form an opinion whether, in all material respects, the financial report is presented fairly in accordance with the accounting policies described in Note 1.

Audit Opinion

In our opinion, the financial report presents fairly in accordance with the accounting policies described in Note 1 to the financial statements, the financial position of Mallee Sexual Assault Unit Incorporated as at 30 June 2018 and the results of its operations for the year then ended.

One2one Accountants & Business Advisers

A handwritten signature in black ink, appearing to read 'Rob Court'.

Rob Court, CPA
18th October, 2018

www.one2oneadvisers.com.au

E: admin@one2oneadvisers.com.au

T: (03) 5021 3355 F: (03) 5021 3131 ABN: 32 148 192 287

Mildura Business Centre 148-150 Pine Avenue Mildura Vic. 3500

POSTAL: P.O. Box 3199 Mildura Vic. 3502

MALLEE SEXUAL ASSAULT UNIT INCORPORATED

BALANCE SHEET FOR THE YEAR ENDED 30 JUNE 2018

	Note	2018 \$	2017 \$
Current Assets			
Cash and cash equivalents	4	5,681,303	4,171,593
Trade and other receivables	5	120,310	14,850
Total Current Assets		<u>5,801,613</u>	<u>4,186,443</u>
Non-Current Assets			
Establishment Fees		3,829	-
Property, plant & equipment	6	3,597,381	1,417,777
Total Non-Current Assets		<u>3,601,210</u>	<u>1,417,777</u>
Total Assets		<u>9,402,823</u>	<u>5,604,220</u>
Current Liabilities			
Trade and other payables	7	485,577	699,295
Short term provisions	8	556,997	502,877
Total Current Liabilities		<u>1,042,574</u>	<u>1,202,172</u>
Non-Current Liabilities			
Long term provisions	8	83,042	266,637
Borrowings	9	2,100,000	637
Total Non-Current Liabilities		<u>2,183,042</u>	<u>267,274</u>
Total Liabilities		<u>3,225,616</u>	<u>1,469,446</u>
Net Assets		<u>6,177,207</u>	<u>4,134,774</u>
Equity			
Retained earnings	10	6,177,207	4,134,774
Total Equity		<u>6,177,207</u>	<u>4,134,774</u>

MALLEE SEXUAL ASSAULT UNIT INCORPORATED

CASH FLOW STATEMENT FOR THE YEAR ENDED 30 JUNE 2018

	Note	2018 \$	2017 \$
Cash Flows From Operating Activities			
Operating grants receipts		6,473,480	5,493,723
Payments to suppliers and employees		(4,916,131)	(4,059,733)
Interest received		13,976	12,917
Other income		95,406	141,532
Net cash provided by operating activities	15a	<u>1,666,731</u>	<u>1,588,439</u>
Cash Flows From Investing Activities			
Purchase of property, plant & equipment		(2,349,566)	(120,101)
Proceeds from sale of property, plant & equipment		93,182	63,770
Net cash provided by (used in) investing activities		<u>(2,256,384)</u>	<u>(56,331)</u>
Cash Flows From Financing Activities			
Proceeds of borrowings		2,099,537	-
Repayment of borrowings		(174)	(131)
Net cash used in financing activities		<u>2,099,363</u>	<u>(131)</u>
Net increase in cash held		<u>1,509,710</u>	<u>1,531,977</u>
Cash at beginning of year		4,171,593	2,639,616
Cash at end of year	15b	<u>5,681,303</u>	<u>4,171,593</u>

MALLEE SEXUAL ASSAULT UNIT INCORPORATED

INCOME STATEMENT FOR THE YEAR ENDED 30 JUNE 2018

	Note	2018 \$	2017 \$
Revenue	2	7,019,604	6,213,355
Employee benefits expense	3	(3,123,361)	(3,020,453)
Administration & operating expenses		(1,763,933)	(1,413,035)
Depreciation & amortisation expenses	3	(89,663)	(89,478)
Interest expense	3	(214)	(69)
Profit before income tax expense		<u>2,042,433</u>	<u>1,690,320</u>
Income tax expense		-	-
Profit from operations		<u>2,042,433</u>	<u>1,690,320</u>



www.msau-mdvs.org.au

Mildura

Suite 1, 144-146 Lime Avenue, Mildura, Victoria 3500
PO Box 1373, Mildura, Victoria 3502
Ph: (03) 5025 5400 Fax: (03) 5025 5432
Email: info@msau-mdvs.org.au

Swan Hill

14-18 McCallum Street, Swan Hill, Victoria 3585
PO Box 1641, Swan Hill, VIC 3585
Ph: (03) 5033 1786 Fax: (03) 5032 4511
Email: info@msau-mdvs.org.au